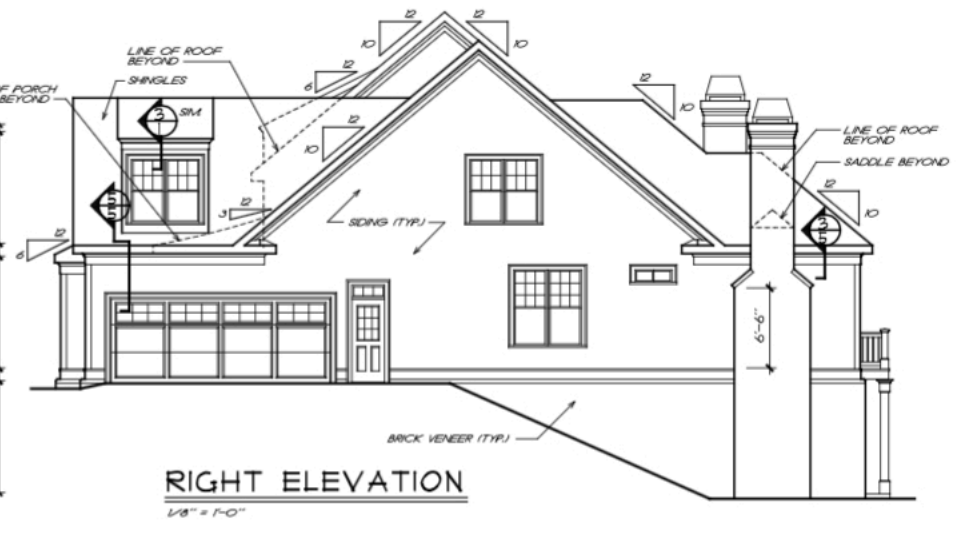


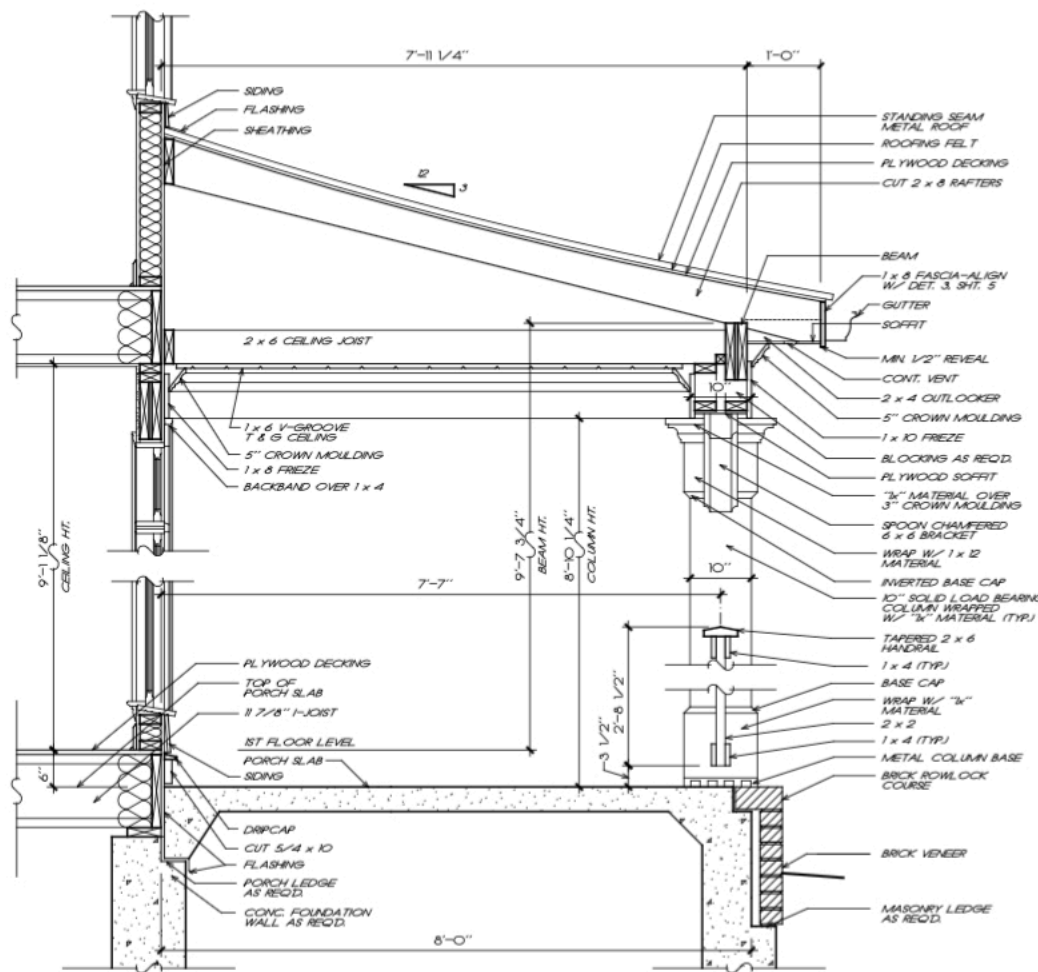
LEFT ELEVATION
1/8" = 1'-0"



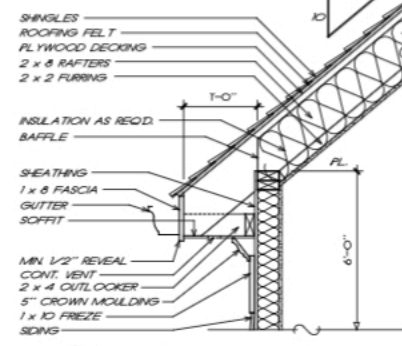
REAR ELEVATION
1/8" = 1'-0"



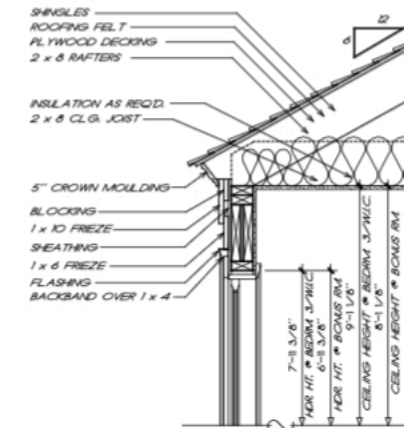
RIGHT ELEVATION
1/8" = 1'-0"



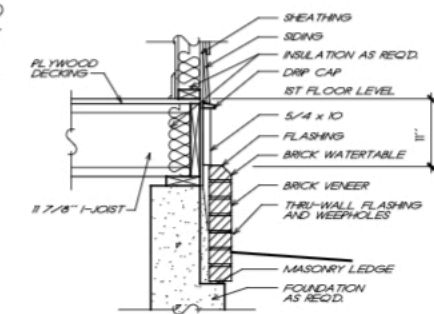
1 PORCH DETAIL
3/4" = 1'-0"



2 CORNICE DETAIL
3/4" = 1'-0"



3 CORNICE DETAIL
3/4" = 1'-0"

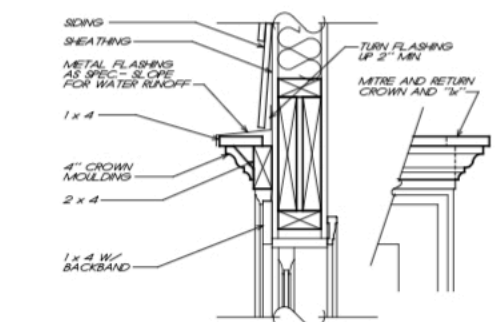


4 WATERTABLE DETAIL
3/4" = 1'-0"

NOTE: WHEN TWO ROOFS INTERSECT WITH DIFFERENT ROOF PITCHES, BLOCK TOP OF STUD WALLS AS REQD. TO LINE UP FASCIAS AT A MINIMUM OF 1'-0" OVERHANG

NOTE: ATTIC VENTILATION PER LOCAL CODES AND REQUIREMENTS

NOTE: RAFTERS ARE PITCHED FROM TOP OF CEILING JOISTS SEE DETAILS



5 TYP. PEDIMENT DETAIL
1 1/2" = 1'-0"



FRONT ELEVATION
1/4" = 1'-0"

NOTE: ELEVATIONS REFLECT A BASEMENT FOUNDATION IF ANOTHER

FRANK BETZ ASSOCIATES, INC. ASSUMES NO LIABILITY FOR ANY CHANGES OR MODIFICATIONS MADE TO THESE PLANS BY OTHERS.

COPYRIGHT © 2006 BY FRANK BETZ ASSOCIATES, INC. NOT TO BE REPRODUCED